

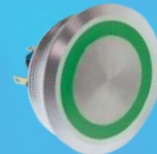
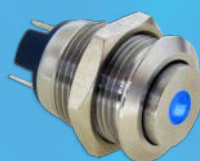


E-SWITCH®



Switches for Today's

ANTI-VANDAL MARKET



High Level of Security

An anti-vandal switch is an electro-mechanical switch designed to be installed in devices and equipment where it is susceptible to harsh use, vandalism, theft, as well as withstand extreme temperatures and be resistant to dust and moisture.

Common applications include pedestrian cross-walks, self-serve parking ticket kiosks, automated bank teller kiosks, apartment intercom systems and gated community security keypad panels.

Anti-vandal switches are also referred to as vandal-resistant, vandal-proof, tamper-resistant or tamper proof. Demand for a switch designed with durability in mind developed in the early 1980s. ATMs and other equipment with public access to keyboards used standard computer keyboard buttons. This made them easy to vandalize by removing and rearranging the keys, which caused users to enter an incorrect password or number passcode preventing access to a bank account or the proper function of a ticket kiosk. In some cases, key pads were missing all together making the keyboard unrecognizable. Thus, for security reasons and to avoid vandalism, keypads were designed with flat surface keys and panels that wouldn't allow any access in between actuator and switch body, nor will the design provide access under or behind the keys with sharp or metal tools. Today, the anti-vandal switch now offers that same security in an individual switch to prevent vandalism.



Intercom



Parking Ticket



ATM



Airport

Prewired Switch = Efficient Installation

Robust and reliable function, aesthetically handsome design and large selection ranging from 6mm to 40mm panel cutout, have catapulted the E-Switch anti-vandal product line to ever increasing popularity. E-Switch is meeting customer objectives by creating anti-vandal product line extensions, as well as new switches with increased functions and features.

Get Wired with E-Switch

E-Switch offers an extensive range of vandal-resistance switches that can be ordered prewired as a stock item. The optional prewired feature is available for the PV series and ULV series anti-vandal products. In addition to the direct wired option, the PV series switch line offers a socket extension to quickly and easily connect power behind the equipment panel. Both options eliminate second sourcing of wire lead purchase and assembly; reduces in-house assembly labor, which saves overall time and cost to the bottom line.



E-Switch offers additional anti-vandal switches which are prewired stock items:

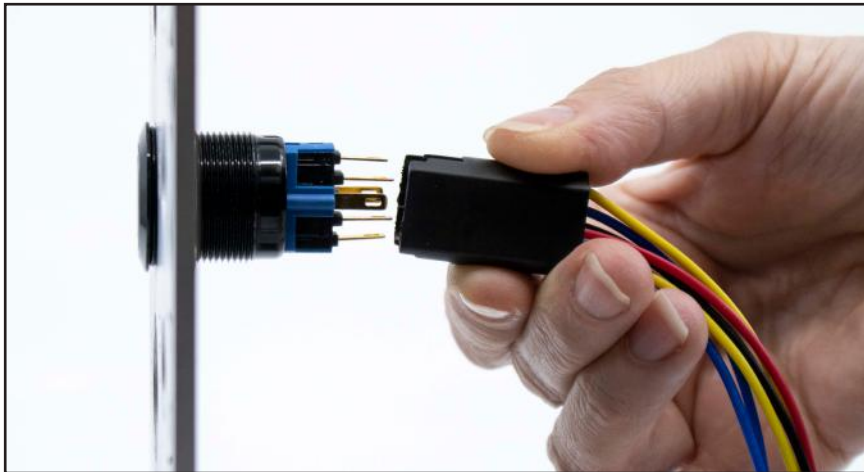
CS series is a capacitive switch, which functions on touch sensor technology. Meaning the switch can be operated with a finger or a tool. Available in two panel cutout sizes – 19mm and 22mm.

PVA6 series is IP67 rated, offers momentary or latching function, panel cutout size 16mm and 22mm.

PVL Pilot Light series offers prewired options in several panel cutout sizes - PVL6 – 6mm, PVL16 – 16mm, PVL25 – 25mm. Provides 150mm long wire leads.

PVT4 series is a single pole momentary Illuminated pushbutton with tactile response. The switch can be operated with a finger or a tool. Provides 150mm long wire leads.

v.e-switch.com for complete specifications of each



there are no moving parts. The CS series comes with 150mm long wire

m and available with 500mm long wire leads.

m, PVL8 – 8mm, PVL10 – 10mm and PVL12 – 12mm. The prewired option

the cutout panel size is 19mm and is available with 300mm long wire

Prewired Assemblies Available!

- Order prewired switch assemblies
- Reduce extra cost and time for you to arrange off site
- Inquire about custom options

ULV Series Wire Lead Assembly Options

ULV Wire Leads

- Pre-order with wire leads attached
- 300mm long wire leads
- Compatible with a variety of connectors

Ordering Options

- Option 1: ULV switch only
- Option 2: ULV switch with wire leads

Option 1



ULV4

ULV7

ULV8

Option 2



PV Series Wire Lead and Assembly Options

PV Series Assembly Options

- Pre-order with wire leads attached
 - 300mm long wire leads
 - Compatible with a variety of connectors
 - PVP socket extension with wire leads attached
- Available for PV Series: 3,4,7,8,9,10
- Option 1: PV switch Only
 - Option 2: PV switch with wire leads
 - Option 3: PVP with solder lugs
 - Option 4: PVP socket with wire leads

Option 1



PV3

PV4

PV7

PV8

PV9

PV10

Option 2



Option 3



PVP socket with solder lugs allows easy, efficient termination. Available for PV3, PV4, PV7

Option 4



PVP socket with wire leads attached is available for PV3, PV4, PV7, PV8, PV9, PV10

When Function Meets Aesthetics:

E-Switch offers a large selection of anti-vandal switches, PV Series and ULV Series, which are available with numerous options. The anti-vandal line ranges in sizes, from a 6mm diameter illuminated indicator to a 40mm panel cutout pushbutton. Multiple options are available in function, body and actuator finishes, non-illuminated or choose from multiple lens styles and LED color options, as well as illumination voltage. Many of the anti-vandal series are rated IP65 or IP67 for dust and moisture protection. Not only is E-Switch's anti-vandal product line highly robust and functional, it is deemed quite attractive. Body finishes and solid style actuator, whether non-illuminated or illuminated makes for a highly aesthetic switch. So aesthetically pleasing that it is often used in applications that do not require anti-vandal properties. Such applications include dashboard controls on motor boats, ATV's and tractor lawn mowers; as well as appliances, HMI and audio/visual control panels.



Beyond Tradition:

• PVS7

Move over standard round anti-vandal switches, the PVS7 series anti-vandal pushbutton offers design engineers a unique feature – a 25mm square bezel, plus the option to order prewired, ready for installation.



• SV 4, 7, 8

Same Anti-Vandal features in a more compact package. The SV series offers users a compact body height for product designs with limited space behind the panel. The SV series comes in three panel cutout sizes – SV4 – 19mm, SV7 – 22mm, SV8 – 25mm. All models provide an IP67 rating for moisture and dust protection; offer multiple LED color options; lens options include ring or ring/power symbol combination; all SV series switches can be ordered prewired with 500mm long wire leads.



• SAV 4, 7, 8 (Snap Action Body)

Looking for an anti-vandal switch with a high current rating? The SAV series is a two-piece switch model that offers a 15A rating. The SAV series anti-vandal actuator installs to the front side of the panel and the snap action switch module is attached to the actuator from the backside of the panel. The SAV series is available in three panel cutout sizes – SAV4 – 19mm, SAV7 – 22mm, SAV8 – 25mm. All models provide an IP67 rating for moisture and dust protection; offer multiple LED color options; lens options include ring, power symbol or ring/power symbol combination



E-Switch offers a large selection of electromechanical switches to fit numerous applications in industries, such as audio/visual, telecommunications, consumer electronics, medical equipment, testing/instrumentation, computer peripherals, industrial type environments and wearable technology devices. Visit www.e-switch.com to view our complete line.



Anti-vandal



Detector



DIP



Keylock



Navigation



Pushbutton



Rocker



Rotary



Rotary DIP



Slide



Snap Action



Tact



Tilt



Toggle



Trigger



7153 Northland Drive N, Minneapolis, MN 55428 USA
1.800.867.2717 | www.e-switch.com