

FEATURES

- ULTRA LOW RESISTANCE VALUES
- PRECISION TOLERANCE AND TEMPERATURE STABILITY
- THIN FILM CONSTRUCTION
- IDEAL FOR CURRENT SENSING APPLICATIONS
- AVAILABLE IN 1 WATT ~ 2 WATT POWER RATINGS

**RoHS
Compliant**

includes all homogeneous materials



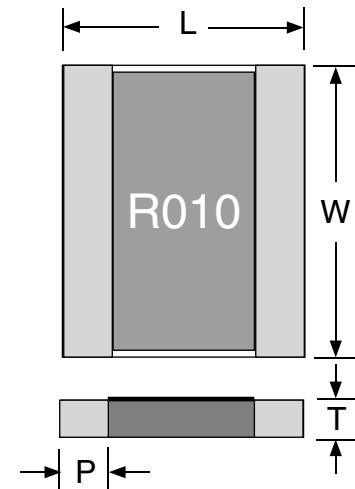
CHARACTERISTICS

*See Part Number System for Details

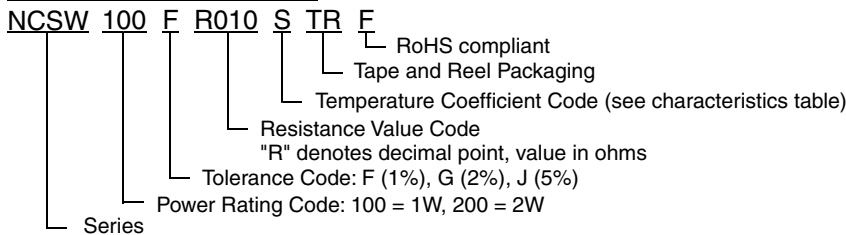
Type	size	Power Rating at 70°C	Resistance Tolerance (Code)	Temperature Coefficient (ppm/°C)	Resistance Range (Ω)	Resistance Value	Operating Temperature Range (°C)
NCSW100	0815	1W	1% (F), 2% (G)	±50 (Q), ±100 (R)	0.1 ~ 1.0	E-6	-55°C ~ +125°C
				0 ~ +200 (S)	0.01 ~ 0.068		
				0 ~ +350 (T)	0.002 ~ 0.009		
NCSW200	0830	2W	±1% (F), 2% (G)	±50 (Q), ±100 (R)	0.1 ~ 0.47	E-6	-55°C ~ +155°C
			±1% (F), 2% (G)	0 ~ +200 (S)	0.01 ~ 0.068		
			±5% (J)	0 ~ +350 (T)	0.001 ~ 0.009		

DIMENSIONS (mm)

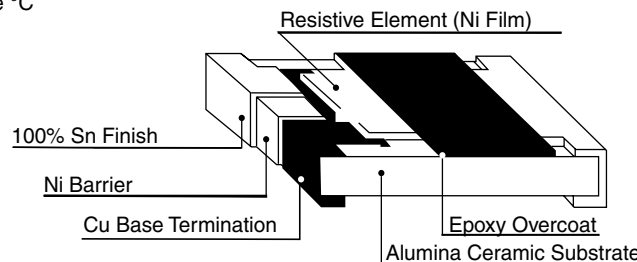
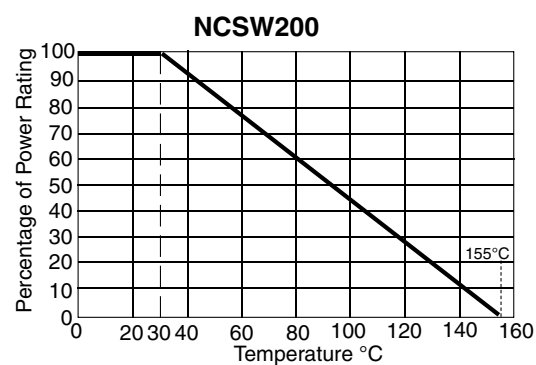
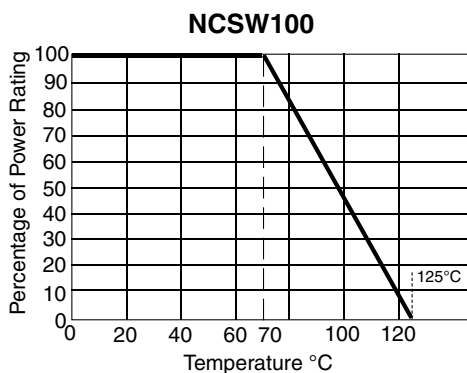
Series	W	L	T	P
NCSW100	3.75 ± 0.30	2.00 ± 0.20	0.55 max.	0.40 ± 0.20
NCSW200	7.50 ± 0.30	2.00 ± 0.20	0.55 max.	0.40 ± 0.20



PART NUMBER SYSTEM



Power Derating Curve: For operation above 70°C, power rating must be derated according to the following chart:



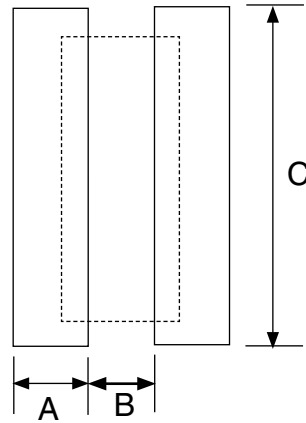
CONSTRUCTION

*Note: Lead Free terminations standard



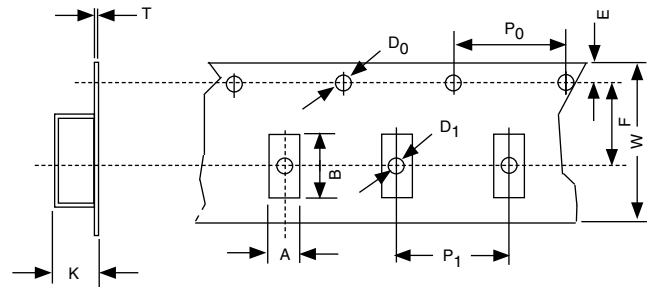
LAND PATTERN DIMENSIONS (mm)

	A	B	C
NCSW100	1.4	1.2	7.9
NCSW200	1.4	1.2	15.8



EMBOSSED PLASTIC CARRIER DIMENSIONS (mm)

Type	A ± 0.1	B ± 0.2	W ± 0.3	F ± 0.10	E ± 0.1	P ₀ ± 0.1	P ₁ ± 0.1	φD ± 0.05	φD ₁ ± 0.05	T ± 0.05	K ± 0.2
NCSW100	2.40	4.25	12.0	5.50	1.75	4.0	4.0	1.55	-	0.3	0.7
NCSW200	2.40	8.00	16.0	7.50					-		



REEL DIMENSIONS (mm) AND QUANTITY

Type	A	B	C	W	Quantity
NCSW100	180 +3/-0	60 +1/-0	13.0 ± 0.2	9.0 ± 0.3	4,000
NCSW200				17.0 ± 0.3	4,000

